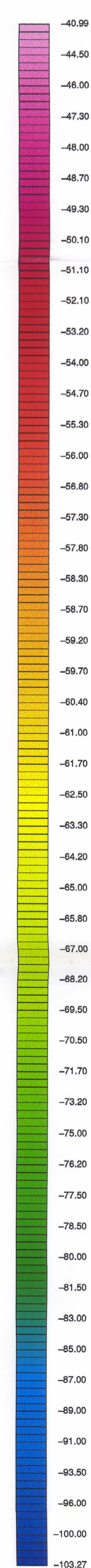
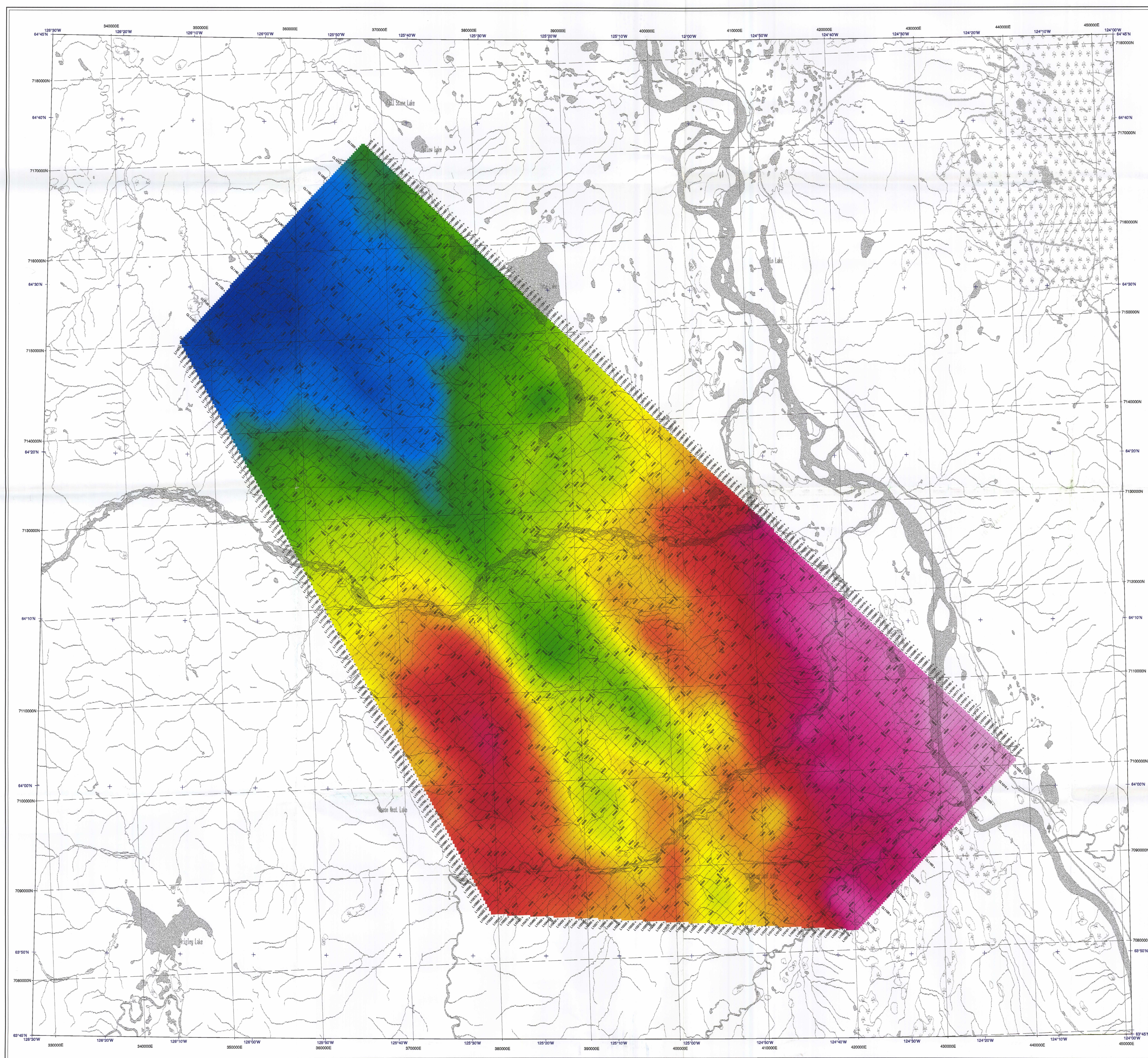


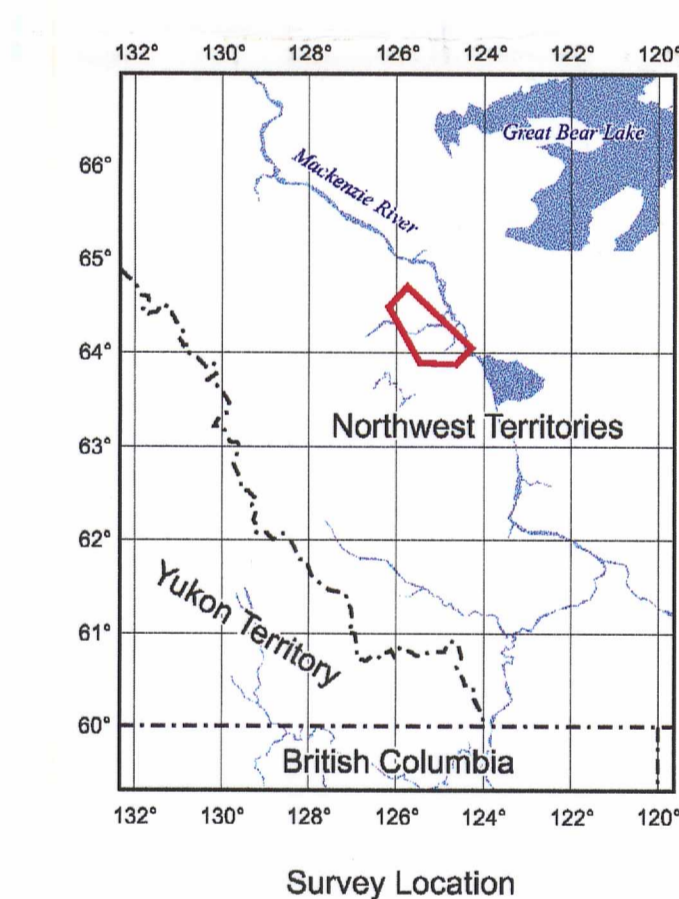


**High Resolution
Airborne Gravity Surveys**
Central Mackenzie Area,

Bouguer Gravity (mG)
(Density 2.67 g/cm³)



Flight Lines
L1410
Line number and direction



Survey and Processing Specifications

Traverse Line Spacing
Traverse Line Direction
Control Line Spacing
Control Line Direction
Aircraft Altitude
Flying Speed
Gravimeter Sensor
Gravimeter Sensitivity
Gravimeter Sample Rate
Aircraft Positioning
GPS Receiver
Aircraft
Density Used for Bouguer and Terrain Corrections 2.67 g/cm ³
Gravity Data Spatial Filter (Full Wavelength) 0% Pass @ 3000 m, 100% 64°20'
GPS Ground Station 1 (WGS-84) 64°20'
GPS Ground Station 2 (WGS-84) 64°20'
Date of Flight
Geoid Datum
UTM Zone

Scale 1 : 150 000
km 2.5

